



抖音
TikTok



快手
Kwai



微信视频号
Channels



微信公众号
Public Platform



微信号
Wechat

国内营销
Domestic marketing



WhatsApp



YouTube



LinkedIn



Wechat

国际营销
International marketing

ZONKIN 中金装备

创新成就价值 卓越改变未来

- 📍 **总部地址：**湖南省长沙市科技新城C6栋三一众创楼
- 📍 **生产基地：**湖南省长沙市长沙县开元东路1322号汇怡产业园
- ☎ **联系电话(微信同号)：** +86 15573123666
- ✉ **邮箱：** zonkingroup@163.com
- 🌐 **网址：** <http://www.zonkingroup.com>

- 📍 **Headquarters Address:** Sany Spark Building, Building c6, Science and Technology New City, Changsha City, Hunan Province, China.
- 📍 **Production Base:** Huiyi Industrial Park, 1322 Kaiyuan East Road, Changsha County, Changsha City, Hunan Province, China.
- ☎ **TEL/WhatsApp:** +86 15573123666
- 📺 **YouTube:** ZONKIN
- ✉ **Email:** tom.zhou@zonkin-group.com
- 🌐 **Website:** <https://www.zonkin-group.com>

- ① 本手册最终解释权归长沙中金智能装备有限公司所有，未经书面许可不得复制或转载。
- ① The final interpretation right of this manual belongs to Changsha ZONKIN Intelligent Equipment Co., Ltd. It may not be copied or reproduced without written permission.

ZONKIN'S
UNIQUE PRODUCT
BROCHURE

中金装备

独特产品手册

创新技术打造独特产品 独特产品创造独特价值
Innovation creates uniqueness Uniqueness delivers value



目 录

CONTENTS

01 企 业 介 绍

Enterprise Introduction

企 业 简 介	Company Profile	01
企 业 文 化	Corporate Culture	03
核 心 人 物	Core Figures	04
独 特 优 势	Unique Advantages	05
企 业 荣 誉	Enterprise Honor	07
媒 体 报 道	Media Coverage	08
创 新 成 果	Innovative Achievements	09

02 独 特 产 品

Unique Product

多 刀 龙 门 剪	Step-Type Multi Blade Gantry Shear	11
高 效 平 口 剪	Efficient Flat-Blade Shear	19
多 主 缸 打 包 机	Multi-Main-Cylinder Metal Baler	21
高 效 屑 饼 机	Efficient Metal Chip Briquetting Machine	24
推 料 破 碎 机	Pushing-Type Crusher	25
高 密 度 包 块 预 碎 机	High-Density Metal Scrap Pre-Shredder	27
液 力 式 钢 筋 撕 碎 线	Hydraulic Steel Bar Shredder	29
废 钢 撕 碎 机	Scrap Steel Shredder	31

推动和引领废钢加工装备行业进步

Promote and lead the advancement of scrap steel processing equipment industry

COMPANY PROFILE

企业简介



三一重工
基因

专注
技术创新

上市
后备企业

ZONKIN INTELLIGENT EQUIPMENT

Compared with engineering machinery industry, the scrap steel processing equipment industry lags behind by 10-15 years in technology, quality and after-sales service. In order to improve the industry level, promote and lead the progress of scrap steel processing equipment industry, Changsha ZONKIN intelligent Equipment co.,Ltd. was established in 2018, with the Sany Heavy Industry located in Sany Spark. Founded by a team of former Sany Heavy Industry maters and doctoral technical experts, the company processes an outstanding R&D and inherits the advanced genes of Sany Heavy Industry in technology, quality and after-sales service.

The company focuses on researching and developing advanced technologies and products has solved industry pain points and increase customer benefits. Through bold innovation, the company's independently developed the products such as the step-type multi-blade gantry shears, hydraulic steel bar shredders, multi-main-cylinder metal balers, pushing-type crushers and high-density metal scrap pre-shredders have effectively solve industry pain points, creates greater value for the customers and become preferred products in the industry.

Adhering to the philosophy of "Innovation Creates Values, Excellent Changes Future", the company dedicates to innovative and pursues "first class- technology, first class- quality, first-class service", promotes and leads the progress of the scrap steel processing equipment industry and became a new star in the industry.

At present, the company has obtained 118 patents and 7 software copyrights (data as of September 30th, 2025). With in just a few years, it has rapidly grown into a National High-Tech Enterprise, a specialized, and innovation small medium-sized enterprise and a Changsha Technology Innovation Center and it has successfully listed on the Sci-Tech Innovation Board of the Hunan Exchange (100143HN) and has been selected as a Listing Reserve Enterprise.

与工程机械行业相比，废钢加工装备行业在技术、质量、售后方面均落后10-15年，针对行业落后的现状，为提升行业水平、推动和引领废钢加工装备行业进步，长沙中金智能装备有限公司于2018年成立于三一重工三一众创孵化园，由原三一重工硕博技术专家团队创建，拥有行业杰出的研发团队，传承了三一重工先进的技术、质量、售后等基因。

公司专注于研发可解决行业痛点、增加客户收益的先进技术和产品。通过大胆创新，公司自主研发的阶梯式多刀龙门剪、液力式钢筋撕碎线、多主缸打包机、推料破碎机、高密度包块预碎机等各类专利产品均有效解决了行业痛点，为客户创造了更大价值，成为了行业优选产品。

公司践行“创新成就价值，卓越改变未来”的理念，专注创新，追求“一流的技术、一流的质量、一流的服务”，推动和引领了废钢加工装备行业进步，成为了行业新星。

目前已获授权专利118项，软件著作权7项（数据截止2025年9月30日）。短短数年，迅速崛起为国家高新技术企业、专精特新中小企业、长沙市技术创新中心，并成功挂牌湖南股权交易所科技创新板（100143HN），入选上市后备企业。



博硕
研发团队

专精特新
企业

长沙技术
创新中心

CORPORATE CULTURE 企业文化

使命

推动和引领废钢
加工装备行业进步

Our Mission

Promote and lead the progress of
the scrap steel processing
equipment industry

价值观

创新成就价值
卓越改变未来

Our Values

Innovation creates value
Excellence changes the future

工作作风

分秒必争
求实守信

Our Work style

Every second counts
Pragmatic and trustworthy

WHAT DO WE WANT TO DO?

The scrap steel processing equipment industry lags far behind the construction machinery industry in terms of technology, product quality, and after-sales service. We hope to build ZONKIN Equipment into the SANY in the scrap steel processing equipment industry, and promote and lead the progress of the scrap steel processing equipment industry.

HOW TO DO?

Through by technological innovation, create greater value for the customers; through by adhering to exceptional standards and a pragmatic and trustworthy approach to significantly enhance product technology, quality and after-sales service level, changing the future of the industry.

WHY US?

Our team originates from Sany Heavy Industry, inhering the excellent genes of "Quality changes the world, Humans grow great through dreams".

WHAT DO WE HAVE ACHIEVED?

- Successfully developed the world's first hydraulic steel bar shredder
- Successfully developed the world's first step-type multi-blade gantry shear
- Successfully developed the world's first large-tonnage multi-main-cylinder metal baler
- Successfully developed the world's first high-density metal scrap pre-shredder
- All the launched products have solved the industry's pain points and have become the preferred products in the industry
- Promoted and led the technological progress and development of the industry

我们想干什么?

废钢加工装备行业，无论是技术、产品质量、售后服务，均远远落后于工程机械行业，我们希望将中金装备打造成废钢加工装备行业的三一，推动和引领废钢加工装备行业进步。

我们怎么干?

通过技术创新为客户创造更大的价值；通过卓越的标准、求实守信的作风大幅提升产品技术、质量和售后服务水平，改变行业的未来。

为什么是我们?

我们均来自于三一重工，传承了三一重工“品质改变世界”与“人类因梦想而伟大”的优良基因。

我们干成了什么?

- 成功研发出世界首台液力式钢筋撕碎线
- 成功研发出世界首台阶梯式多刀龙门剪
- 成功研发出世界首台大吨位多主缸打包机
- 成功研发出世界首台高密度包块破碎机
- 上市产品均解决了行业痛点，成为行业优选产品
- 推动和引领了行业技术进步和发展

CORE FIGURES 核心人物



天使投资人

易小刚 博导

- ◆ 三一集团董事、执行总裁兼总工程师
- ◆ 中国科协第八届常委
- ◆ 十佳全国优秀科技工作者
- ◆ 首届国家卓越工程师获得者（全国仅81人）

ANGEL INVESTOR

Yi Xiaogang (Doctoral Tutor)

- ◆ Director, Executive President, and Chief Engineer of Sany Group
- ◆ Standing Committee Member of the 8th China Association for Science and Technology
- ◆ Top Ten National Outstanding Science and Technology Workers
- ◆ The first recipient of the National Outstanding Engineer Award (Only 81 people Nationwide)



总经理

林涛 博士

- ◆ 湖南省科技创业领军人才
- ◆ 长沙市高层次紧缺急需人才
- ◆ 获湖南省科技进步一等奖
- ◆ 废钢加工装备行业唯一博士

GENERAL MANAGER

Lin Tao (Doctorate)

- ◆ Hunan Provincial Leading Talent in Technology Entrepreneurship
- ◆ High-Level Urgently Needed Talent in Changsha City
- ◆ Recipient of First Prize of Hunan Provincial Science and Technology Progress Award
- ◆ One of the Only PhDs in the Scrap Steel Processing Equipment Industry

UNIQUE ADVANTAGES 独特优势



专注创新 破局引领

ENGINEERING INNOVATION, DEFINING INDUSTRY LEADERSHIP

研发团队——博士领衔，1博6硕8本，行业杰出工程机械研发精英团队，严格按照工程机械研发流程进行产品开发。

研发投入——研发投入占比超过10%，远超机械行业3-5%的平均水平。

研发成果——目前已研发出的国内外多款行业创新产品，均成为行业优选产品，如阶梯式多刀龙门剪、液力式钢筋撕碎线、多主缸打包机、推料破碎机、高密度包块预碎机等。

产品专注——产品研发不追求数量但追求质量，产品上市不追求速度但追求稳定，产品专注一个，上市一个，成功一个。

R&D Team — Led by PhDs, 1 Doctoral Degree, 6 Master's Degrees, 8 Bachelor's Degrees, our team consists of outstanding engineering machinery R&D elites who strictly follow engineering machinery R&D processes for product development.

R&D Investment — R&D investment accounts for over 10% of total expenditure, far exceeding the industry average of 3-5% in the machinery industry.

R&D Achievements — Which have been developed domestically and internationally, have become the top brand in the industry such as the step-type multi blade gantry shears, hydraulic steel bar shredders, multi-main-cylinder metal balers, pushing-type crusher, and high-density metal scrap pre-shredders.

Product Focus — We prioritize quality over quantity in product development, and stability over speed in product launches. We focus on one product at a time, ensuring each release is a success.

博士领衔

杰出工程机械
研发团队

研发投入
超10%

创新产品
行业优选

市场
占有率高

核心研发团队 Core R&D Team

序号 Serial No.	学历 Education	专业 Major	三一重工就职年限 Tenure at SANY Heavy Industry
1	博士 Doctorate	机械电子工程 Mechatronic Eng.	17年(研究院副院长) 17yrs (Vice Dean of Research Inst.)
2	硕士 Master's Degree	机械设计 Mechanical Design	10年(增速机所所长) 10yrs (Head of Speed Increaser Inst.)
3	硕士 Master's Degree	机械电子工程 Mechatronic Eng.	10年(液压变桨项目经理) 10yrs (Hydraulic Pitch PM)
4	硕士 Master's Degree	机械自动化 Mechanical Automation	8年(风机项目经理) 8yrs (Wind Turbine PM)
5	硕士 Master's Degree	机械制造及自动化 Mechanical Manufacturing & Automation	8年(压裂车项目经理) 8yrs (Fracturing Truck PM)
6	硕士 Master's Degree	机械工程 Mechanical Eng.	3年(增速机项目经理) 3yrs (Speed Increaser PM)
7	硕士 Master's Degree	机械工程 Mechanical Eng.	10年(液压研发项目经理) 10yrs (Hydraulic R&D PM)
8	本科 Bachelor's Degree	机械设计及自动化 Mechanical Design & Automation	8年(平地机项目经理) 8yrs (Motor Grader PM)
9	本科 Bachelor's Degree	自动化 Automation	2年(2MW风电项目经理) 2yrs (2MW Wind Power PM)
10	本科 Bachelor's Degree	机械制造及自动化 Mechanical Manufacturing & Automation	5年(平地机传动系统项目经理) 5yrs (Motor Grader Transmission System PM)
11	本科 Bachelor's Degree	工业自动化 Industrial Automation	5年(电气研发项目经理) 5yrs (Electrical R&D PM)
12	本科 Bachelor's Degree	机械工程及自动化 Mechanical Eng. & Automation	3年(自动化项目经理) 3yrs (Automation PM)
13	本科 Bachelor's Degree	自动化 Automation	4年(自动化项目经理) 4yrs (Automation PM)
14	本科 Bachelor's Degree	机械工程及自动化 Mechanical Eng. & Automation	/
15	本科 Bachelor's Degree	机械工程 Mechanical Eng.	/



技术先进 加工成本低

MORE ADVANCED TECHNOLOGY AND LOWER PROCESSING COST

技术先进——公司只研发能解决行业痛点、增加客户收益的好产品，故产品一上市即成为行业技术标杆。

加工成本低——公司研发出的产品装机功率普遍低于行业传统产品约30%，加工效率普遍高出约30%，故加工成本更低。

Advanced Technology — The company focuses exclusively on developing high-quality products that solve industry pain points and increase customer profits. As a result, our products immediately become industry benchmarks for technological excellence upon release.

Lower Processing Cost — Our products typically consume approximately 30% less installed power compared to traditional industry equipment, while processing efficiency is generally about 30% higher, resulting in significantly reduced operational costs.

解决
行业痛点

设备
技术先进

装机功率低
约30%

生产效率
约30%



严控质量 工程机械标准

EXCELLENCE IN ENGINEERING MACHINERY QUALITY STANDARDS

设计质量——严格按照杰出工程机械研发流程开发产品，绝不让不合格的产品流入市场。

零件质量——遴选工程机械大批量使用的优质零部件。

装配质量——源自工程机械领域经验丰富的装配人员进行全程装配。

质量检验——严格按照杰出工程机械产品检验规程，严格把关每一道工序。

Design Quality — Strictly follow the top-level engineering machinery research and development process to develop products, and never allow unqualified products to enter the market.

Component Quality — Select high-quality components for large-scale use in construction machinery.

Assembly Quality — Sourced from experienced assembly personnel with top-notch engineering machinery for the entire assembly process.

Quality Inspection — Strictly follow the inspection procedures for top-level construction machinery products and rigorously control every process.

杰出工程机械
研发标准

优质
零部件

杰出工程机械
装配队伍

杰出工程机械
产品检验



一把手工程 售后无忧

TOP-NOTCH ENGINEERING, WORRY FREE AFTER-SALES SERVICE

一把手亲自监督——公司一把手亲自、全程监督每一次售后服务工作。

一把手直面客户——公司一把手在售后微信群中直面客户，倾听所有客户最直接的心声。

"112"服务承诺——1刻钟响应客户提出的问题，1天内到达主要服务区域，2天内提供常用维修配件，专人管理、跟进。

Personally Supervised by Top Leadership – The company's top leader personally oversees and manages every after-sales service engagement from start to finish.

Direct Client Communication by Top Leadership – The company's top leader actively engages with customers in after-sales WeChat groups, listening directly to client feedback.

"112" Service Commitment – 15 minutes: Respond to customer inquiries; 1 day: On-site support in key service regions; 2 days: Supply common maintenance parts; Dedicated personnel for management and follow-up.

一把手
亲自监督

一把手
直面所有客户

1刻钟
响应客户问题

1天
到达服务区域

2天
提供维修配件

ENTERPRISE HONOR 企业荣誉



易小刚——国家卓越工程师
Yi Xiaogang—National outstanding engineer



林涛——湖南省科技创业领军人才
Lin Tao—Leading talent in science and technology entrepreneurship in Hunan Province



长沙经开区上市后备企业
Changsha economic development zone listed reserve enterprise



国家高新技术企业
National high-tech enterprise



国家级科技型中小企业
National level technology-based small and medium-sized enterprises



科技创新专板挂牌企业
Enterprises listed on the science and technology innovation special board



湖南省专精特新“小巨人”企业
Hunan province specialized, refined, unique and New "Little Giant" enterprise



长沙市技术创新中心
Changsha technology innovation center



长沙经开区税收贡献奖
Tax contribution award of Changsha Economic Development Zone

MEDIA COVERAGE 媒体报道

2024年9月23日，湖南省委书记沈晓明代表党中央，看望慰问中金装备天使投资人、国家卓越工程师获得者易小刚。

On September 23rd, 2024, Shen Xiaoming, Secretary of the Hunan Provincial Party Committee, visited and comforted Yi Xiaogang, an angel investor in ZONKIN Equipment and a recipient of the National Outstanding Engineer award, on behalf of the Party Central Committee.



微信扫码观看
Scan the QR Code with WeChat to Watch the Video



2024年11月8日，中金装备总经理林涛博士接受CCTV央视名嘴董倩专访。

On November 8th, 2024, Dr. Lin Tao, General Manager of ZONKIN equipment was interviewed by renowned CCTV host Dong Qian.



微信扫码观看
Scan the QR Code with WeChat to Watch the Video



2024年3月6日，中金装备阶梯式多刀剪，作为新质生产力典型代表，被人民网详细报道。

On March 6th, 2024, ZONKIN's Step-Type Multi Blade Gantry Shear was featured in detailed report by People's Daily online as a typical representative of new quality productive forces.



微信扫码观看
Scan the QR Code with WeChat to Watch the Report



2025年4月17日，湖南卫视18:30档的《新闻联播》重磅专题报道了中金装备林涛博士的创新历程。

On April 17th, 2025, Hunan satellite TV's prime time "News Broadcast" at 18:30 featured a special report on the innovation journey of Dr. Lin Tao from ZOMKIN Equipment.



微信扫码观看
Scan the QR Code with WeChat to Watch the Video



STEP-TYPE MULTI BLADE GANTRY SHEAR
多刀龙门剪



产品宣传片
Promotional Video

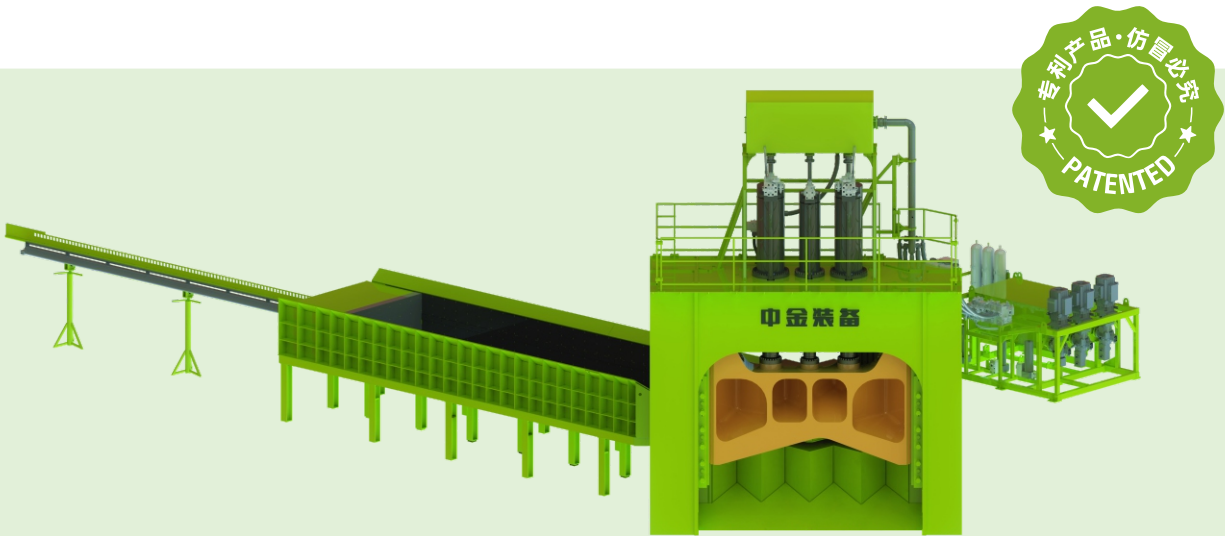


剪切各种料型
Shear Various Types of Materials



日常工作实拍
Daily Work Video

微信扫码观看
Scan the QR Code with
WeChat to Watch the Video



主要参数 PARAMETERS

型号 Model	最大剪切力 Maximum Shear Force (t)	刀口宽度 Width of blade edge (mm)	主电机功率 Main motor power (kW)	最小剪切开口高度 Minimum shear opening height (mm)	理论出料尺寸 Theoretical discharge dimensions (mm)	料箱尺寸(长×宽×高) Box dimensions (L × W × H) (mm)	空载剪切次数(次/分钟) No-load shearing times (times/min)	备注 Remarks
500-F	500	1600	1 × 76.2	400	<400×400 (4段/4sections)	6000 × 1500 × 650	4.0	/
630-F	630	1800	1 × 111	450	<450×450 (4段/4sections)	7000 × 1700 × 900	4.0	/
		2500	2 × 76.2	450	<500×500 (5段/5sections)	7000 × 2400 × 900	4.0	/
800-F	800	2000	2 × 76.2	550	<400×400 (5段/5sections)	8000 × 1900 × 900	4.0	/
		2500	2 × 89.6	550	<500×500 (5段/5sections)	8000 × 2400 × 900	4.0	/
		2500	2 × 89.6	900	<500×500 (5段/5sections)	8000 × 2400 × 900	4.0	船板机型 scrapped ship plate
1000-F	1000	2000	2 × 89.6	550	<500×500 (4段/4sections)	8000 × 1900 × 1100	4.0	/
		2500	3 × 76.2	550	<500×500 (5段/5sections)	8000 × 2400 × 1100	4.0	/
		2500	3 × 76.2	900	<500×500 (5段/5sections)	8000 × 2400 × 1100	4.0	船板机型 scrapped ship plate
		2800	3 × 76.2	900	<560×560 (5段/5sections)	8000 × 2700 × 1100	4.0	船板机型 scrapped ship plate
1250-F	1250	2000	3 × 76.2	650	<500×500 (4段/4sections)	8000 × 1900 × 1100	4.0	/
		2500	3 × 89.6	650	<500×500 (5段/5sections)	8000 × 2400 × 1100	4.0	/
		2500	3 × 89.6	900	<500×500 (5段/5sections)	8000 × 2400 × 1100	4.0	船板机型 scrapped ship plate
		2800	4 × 76.2	930	<400×400 (7段/7sections)	8000 × 2700 × 1100	4.0	船板机型 scrapped ship plate
1600-F	1600	2500	2×111+2×89.6	930	<500×500 (5段/5sections)	8000 × 2400 × 1100	4.0	船板机型 scrapped ship plate
		2800	2×111+2×89.6	930	<560×560 (5段/5sections)	8000 × 2700 × 1100	4.0	船板机型 scrapped ship plate
2000-F	2000	2500	4 × 111	930	<500×500 (5段/5sections)	8000 × 2400 × 1100	4.0	船板机型 scrapped ship plate
		2800	4 × 111	930	<560×560 (5段/5sections)	8000 × 2700 × 1100	4.0	船板机型 scrapped ship plate

* 说明：由于技术不断更新，技术参数和外形可能有更改，恕不另行通知。
* Explanation: Due to continuous technological updates, technical parameters and appearance may change without prior notice.

专利号 Patent Number

2023103859603/发明专利	2020204619558/实用新型	202420376901X/实用新型	2021215895310/实用新型
2021202312817/实用新型	2022208946473/实用新型	2020204619810/实用新型	2021221116060/实用新型
202122284421X/实用新型	2023235250666/实用新型	2023205508607/实用新型	2023301151672/外观设计

等多项

独特优势一

UNIQUE ADVANTAGES 1

市场占有率高

HIGHER MARKET SHARE



中金多刀龙门剪部分分布图

ZONKIN's Step-Type Multi Blade Gantry Shear Partial Distribution Map



中金装备销量
Sales volume of ZONKIN

其他厂家销量总和
Total sales of other manufacturers

独特优势二

UNIQUE ADVANTAGES 2

技术成熟 可靠耐用

MATURE, RELIABLE AND DURABLE TECHNOLOGY IN THE INDUSTRY

研发时间持久：2020年开始潜心研发

研发力量雄厚：博士领衔、行业杰出的工程机械研发精英团队

研发经验丰富：拥有行业丰富的不同地域、不同料型、不同型号等实际设计和使用经验数据，阶梯式多刀剪的设计和使用的经验数据为同行的数十倍

研发流程专业：严格按照三一重工产品研发流程开发，第一代凹凸式多刀剪研发样机因未通过厂内测试，直接切割报废

研发目标专注：2020年专注多刀龙门剪至今，目前阶梯式多刀剪已升级至第六代

Prolonged R&D Period: Committed to intensive R&D since 2020

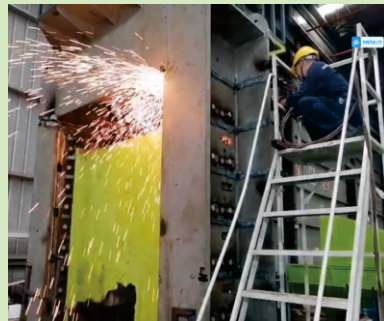
Strong R&D Capability: Led by PhDs, with an elite team of outstanding engineering machinery R&D experts

Rich R&D Experience: Possesses rich practical data from diverse regions, material types, and models in the industry. Design and operational experience data for the stepped multi-blade shear are dozens of times greater than those of peers

Professional R&D Process: Strictly follows Sany Heavy Industry's product development process. The first-generation concave-convex multi-blade shear prototype was scrapped and cut up directly after failing internal factory tests

Focused R&D Objective: Dedicated to multi-blade gantry shears since 2020. The stepped multi-blade shear has now been upgraded to the sixth generation

切割中
Being Cut



切割解体
Dismantling



切割后
Post-Cutting



为确保设计质量，百余万元的凹凸式多刀剪研发样机直接切割报废

To ensure design quality, the prototype of the concave convex multi blade shear with a cost of over one million yuan was directly cut and scrapped



第一代产品
First gen



第二代产品
Second gen



第三代产品
Third gen



第四代产品
Fourth gen



第五代产品
Fifth gen

独特优势三

UNIQUE ADVANTAGES 3

加工成本低

LOWER PROCESSING COST

电机功率比同行低约30%

加工效率比同行高约30%

所有刀片均可使用四个刃口

The motor power is about 30% lower than its peers

The processing efficiency is about 30% higher than that of peers

All blades can use four cutting edges

约2年可节省出一台多刀剪

It can save one set step-type multi blade gantry shear on processing cost about 2 years

独特优势四

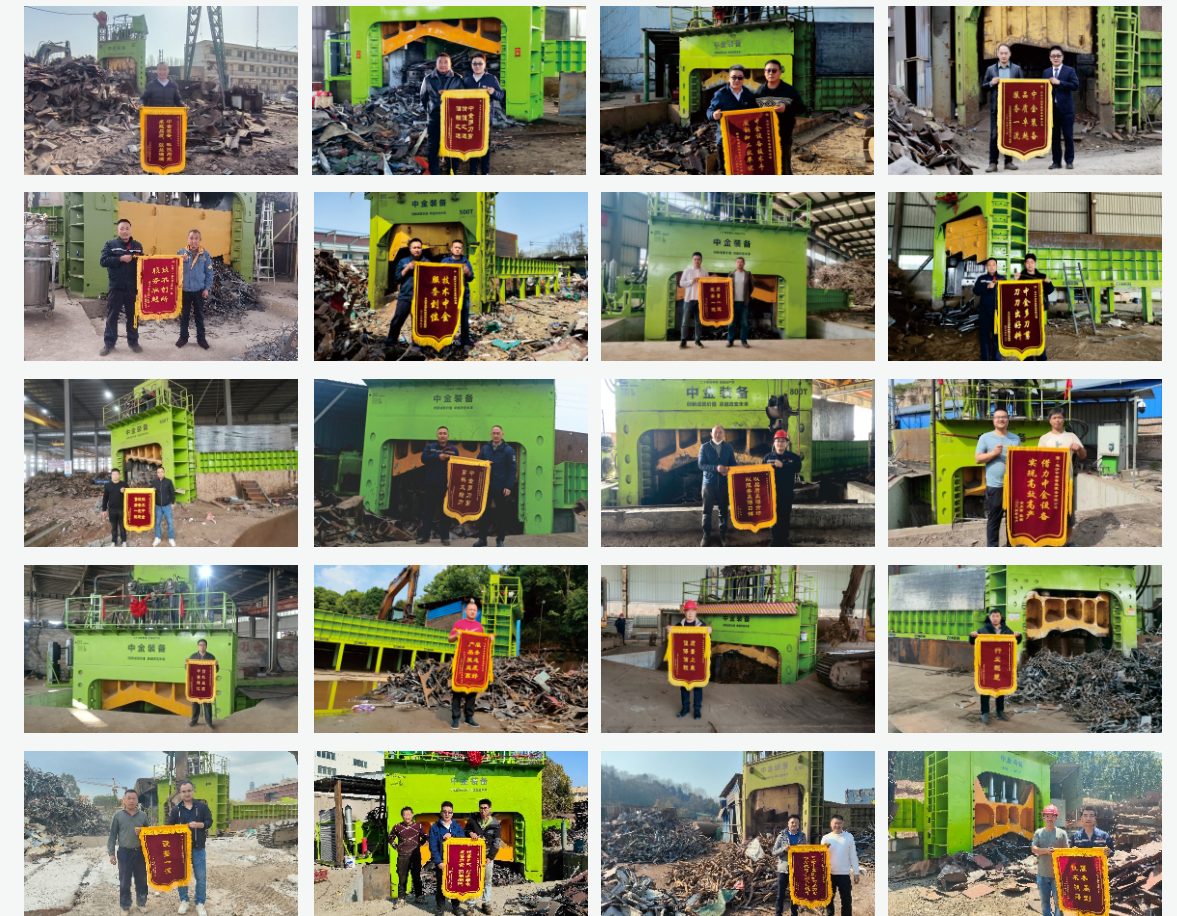
UNIQUE ADVANTAGES 4

使用口碑出色

EXCELLENT REPUTATION FOR USE

从装机的第一台起，零差评、零退（换）机，保持行业记录

Zero negative reviews, zero returned or exchanged machines, maintaining industry records



研发历程

RESEARCH AND DEVELOPMENT PROCESS

2020.6~2021.2

凹凸式多刀龙门剪样机下线
开启厂内严苛试验

The prototype of concave-convex multi-blade shears rolled off the production line Initiate rigorous in-plant testing



2021.3~2021.4

凹凸式多刀剪未通过厂内严苛试验
切割报废

The concave-convex multi-blade shears failed to pass the rigorous in-plant test and were cut and scrapped



2021.5~2022.3

创新研发阶梯式专利多刀剪
通过厂内严苛试验

Patented original step-type multi blade gantry shears passed the rigorous in-plant test



2022.4~2023.3

研发样机通过厂外一年严苛试验
成功上市

The prototype passed the one-year rigorous test outside the plant and successfully marketed.



典型案例

TYPICAL CASES

首单树新风 逆市创佳绩

宁夏程总是我司第一个多刀剪客户，利用中金装备高效、稳定的阶梯式多刀剪，成功开辟了为同行代加工的新业务，实现了业务和利润均逆市上涨。

THE FIRST ORDER BRINGS A NEW TREND ACHIEVES EXCELLENT RESULTS AGAINST THE MARKET

Mr Cheng from Ningxia is our first multi blade shears customer. By utilizing the efficient and stable stepped multi blade shears equipment provided by ZONKIN, he has successfully opened up a new business of outsourcing processing for our peers, achieving both business and profit growth against the market trend.



品质赢信任 一连购五台

江苏盐城汪总在两年内连续采购了5台阶梯式多刀剪，废旧船板加工量从千吨级上升到万吨级，被同行赞誉为“船板大王”。

QUALITY WINS TRUST PURCHASE FIVE UNITS IN A ROW

Within two years, Mr. Wang from Yancheng, Jiangsu Province purchased 5 units step type multi-blade gantry shears continuously, and the processing volume of waste ship plates increased from thousands of tons to tens of thousands of tons, earning him the title of "Ship Plate King" among his peers.



先进装备助力 打造金字招牌

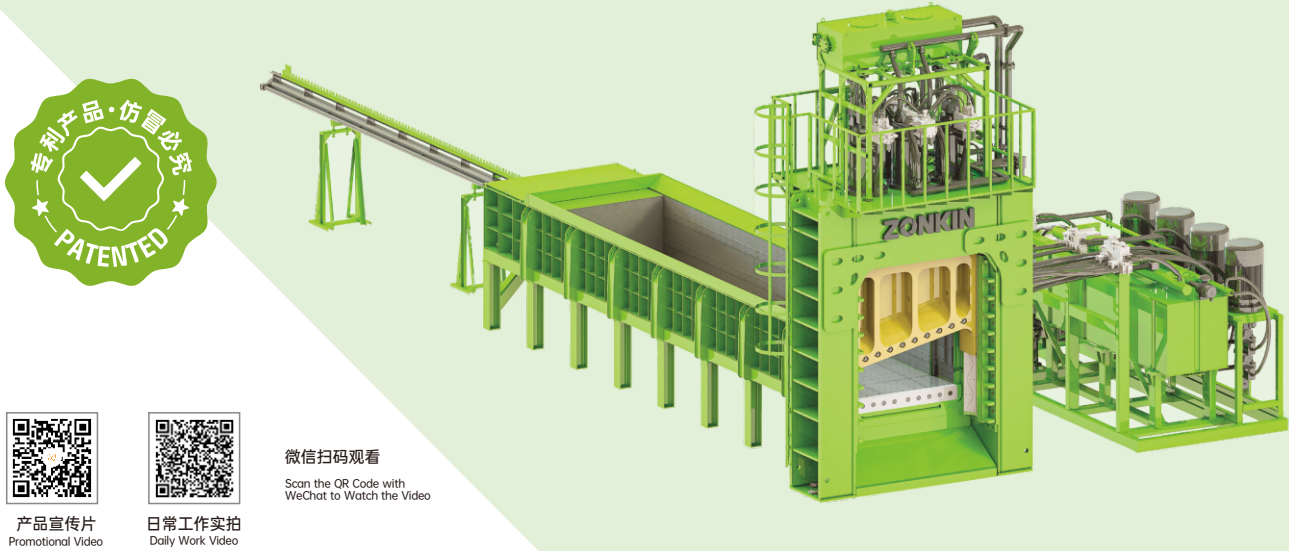
浙江钟总半年内连购2台阶梯式多刀剪，大幅提升了加工效率和效益，打造成了杭嘉湖工业花板料加工的金字招牌。

ADVANCED EQUIPMENT ASSISTANCE CREATE A GOLDEN SIGNBOARD

Mr Zhong from Zhejiang has purchased 2 sets of step-type multi blade gantry shears in a row within six months, greatly improving processing efficiency and benefits, and has created a golden signboard for Hangjiahu perforated metal patterns processing.



EFFICIENT FLAT-BLADE SHEAR 高效平口剪



专利号 Patent Number
202020461870X/实用新型 2020204619810/实用新型 2020204619153/实用新型 2020204619558/实用新型 等多项

主要参数 PARAMETERS

型号 Model	最大剪切力 Maximum Shear Force (t)	刀口宽度 Width of blade edge (mm)	主电机功率 Main motor power (kW)	最小剪切开口高度 Minimum cutting opening height (mm)	压料最高高度 Maximum height of compressed material (mm)	料箱尺寸(长×宽×高) Box dimensions (L×W×H) (mm)	空载剪切次数 (次/分钟) No-load cutting times (times/min)
630K	630	1800	1×111	500	1000	7000×1700×900	4.0
		2500	2×76.2	500	1000	7000×2400×900	4.0
800K	800	2000	2×76.2	650	1200	8000×1900×900	4.0
		2500	2×76.2	650	1200	8000×2400×900	4.0
1000K	1000	2000	2×89.6	650	1200	8000×1900×1100	4.0
		2500	2×89.6	650	1200	8000×2400×1100	4.0
1250K	1250	2000	3×76.2	700	1200	8000×1900×1100	4.0
		2500	3×76.2	700	1200	8000×2400×1100	4.0
1600K	1600	2000	4×76.2	700	1300	8000×1900×1100	4.0
		2500	4×89.6	700	1300	8000×2400×1100	4.0
1800K	1800	2000	1×111+3×67.3	850	1450	8000×1900×1100	4.0
		2500	1×111+3×67.3	850	1450	8000×2400×1100	4.0
2000K	2000	2000	1×111+3×67.3	1000	1450	8000×1900×1100	4.0
		2500	2×111+2×67.3	1000	1450	8000×2400×1100	4.0
2500K	2500	2000	2×111+2×67.3	1000	1450	8000×1900×1100	4.0
		2500	3×111+1×67.3	1000	1450	8000×2400×1100	4.0

* 说明：由于技术不断更新，技术参数和外形可能有更改，恕不另行通知。
* Explanation: Due to continuous technological updates, technical parameters and appearance may change without prior notice.

独特优势 UNIQUE ADVANTAGES

- ◆ 加工成本低：加工成本低，电机功率比传统产品低约30%，工作效率快约30%，约2年可节省出一台平口剪
- ◆ 更可靠耐用：采用工程机械设计标准，丰富的多刀龙门剪设计经验，关键部件均采用等强度设计，质量更可靠、更耐用
- ◆ 售后无忧：一把手工程，售后无忧
- ◆ Lower Processing Cost: The processing cost is the lowest in the industry, the motor power is approximately 30% lower than traditional products, it can save one set efficient flat - blade shear on processing cost about 2 years
- ◆ More Reliable and Durable: Adopting engineering machinery design standards, with rich experience in step-type multi blade gantry shear design, and reinforced design for key components, the quality is more reliable and durable
- ◆ Worry-Free After-Sales Service: Dedicated leadership oversight ensures comprehensive after-sales support

典型案例 TYPICAL CASES

连续复购 逆市崛起

江苏盐城汪总在连续采购中金装备三条钢筋撕碎线和五台多刀龙门剪后，为进一步做大做强、大幅提高钢筋颗粒的产能，直接选择了行业效率最高的平口龙门剪——中金1450吨高效平口剪，设备的稳定、高效有效助力客户迅速做大做强，逆市崛起。



SUSTAINED REPURCHASES MARKET-RESISTANT GROWTH

Mr. Wang from Yancheng, Jiangsu previously purchased three steel bar shredding lines and five multi-blade gantry shears from ZONKIN, directly selected the industry's most efficient flat gantry shear—the ZONKIN 1450-ton high-performance model—to further expand operations and significantly increase production capacity for steel bar granules. The equipment's remarkable stability and efficiency have effectively supported the customer's rapid expand and strength its business, achieving remarkable growth against market trends.

再择先进装备 继续做大做强

某华北实力雄厚的客户采购中金装备2台阶梯式多刀剪后，为扩大生产，继续选择了中金1800吨、2.5米刀口的高效平口剪，专用于剪切钢筋团，该龙门剪效率高、使用稳定，助力客户继续做大做强。

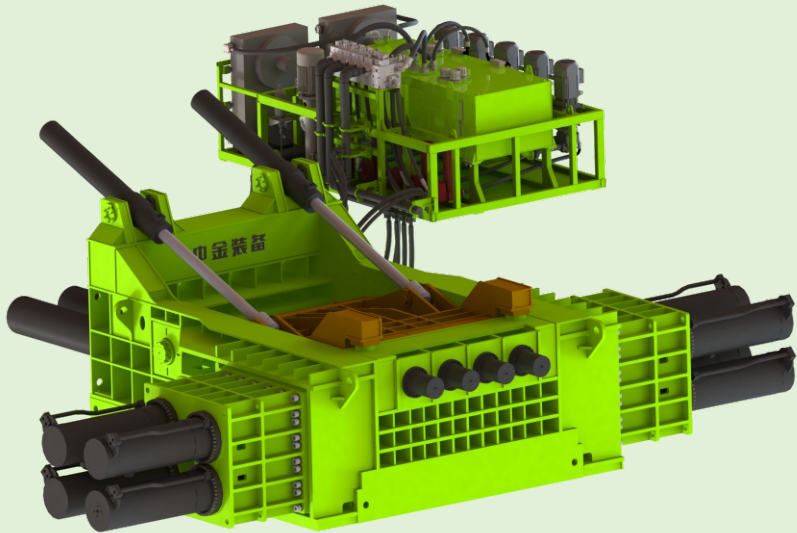


REINVESTING IN ADVANCED TECH STRENGTHENING OPERATIONS

A well-established customer in North China, having previously purchased two sets of ZONKIN's stepped multi-blade shears, continued to choose ZONKIN's efficient 1800-ton flat gantry shear with a 2.5-meter blade width to expand production. Specifically designed for cutting steel bar bundles, this gantry shear operates with high efficiency and exceptional stability.

MULTI-MAIN-CYLINDER METAL BALER

多主缸打包机



产品宣传片
Promotional Video



日常工作实拍
Daily Work Video

微信扫码观看
Scan the QR Code with
WeChat to Watch the Video

专利号 Patent Number

2022114899737/发明专利
2020204619990/实用新型
2020204619543/实用新型
2022219103550/实用新型
2022210374843/实用新型
202020461944X/实用新型
2024219982947/实用新型
202430524187X/外观专利
2024305241761/外观专利
等多项

主要参数 PARAMETERS

主要参数 Parameters	Y81-630	Y81-1000	Y81-1500	Y81-2000	Y81-2500	Y81-3000	Y81-4000
主缸总公称推力 Main cylinder total nominal thrust (t)	630	1000	1500	2000	2500	3000	4000
包块截面尺寸 Bale cross-sectional dimensions (mm)	600×600 或700×700	700×700 或800×800	700×700 或800×800	700×700 或800×800	700×700 或800×800	700×700 或800×800	700×700 或800×800
料箱尺寸 (长×宽×高) Container dimensions (L×W×H) (mm)	3500×3000 ×1200	3500×3000 ×1300	4000×3000 ×1400	4000×3000 ×1500	4000×3000 ×1600	4000×3000 ×1600	4000×3000 ×1600
主电机功率 Main motor power (kW)	90 (1×90)	128 (2×64)	192 (3×64)	304 (4×76)	360 (4×90)	450 (5×90)	540 (6×90)

* 说明：由于技术不断更新，技术参数和外形可能有更改，恕不另行通知。
* Explanation: Due to continuous technological updates, technical parameters and appearance may change without prior notice.

独特优势 UNIQUE ADVANTAGES

- ◆ **主缸使用无忧：**采用多主缸专利技术，有效解决传统单主缸的系列痛点，主缸使用无忧
- ◆ **质量更可靠：**整机采用工程机械质量标准，主缸质量及使用寿命与工程机械油缸相媲美，品质无忧，可靠省心
- ◆ **加工成本更低：**装机功率降低约30%，年省电费约15万元，液压油使用量节省约50%
- ◆ **售后无忧：**一把手工程，售后无忧
- ◆ **Patent Technology:** Utilizes patented multi-main cylinder technology, breaking through the limitations of traditional single-main cylinder designs
- ◆ **Reliable Quality:** The entire machine is built to engineering machinery quality standards. The main cylinder's quality and service life are comparable to those of engineering mechanical hydraulic cylinders, ensuring trouble-free operation, reliability, and peace of mind
- ◆ **Lower Costs:** Reduced operating costs with installed power decreased by approximately 30%, saving about 150,000 yuan annually in electricity expenses, and hydraulic oil usage reduced by roughly 50%
- ◆ **Worry-Free After-Sales Service:** Dedicated leadership oversight ensures comprehensive after-sales support

典型案例 TYPICAL CASES

智选成套先进设备 建设行业标杆基地

华中某实力非常雄厚的行业资深客户，在新建设废钢基地时，为将基地建设成行业新标杆，深入了解中金设备的先进性和稳定性后，一次性采购了中金装备2000吨打包机、1250吨多刀龙门剪、630kW推料破碎机。



SMART EQUIPMENT SELECTION LANDMARK FACILITY CONSTRUCTION

A well-established and powerful industry client in Central China, seeking to establish a new scrap steel base as an industry benchmark, purchased ZONKIN Equipment's 2000-ton baler, 1250-ton multi-blade gantry shear, and 630kW pushing-type crusher in a single order after a thorough evaluation of the equipment's advanced technology and reliability.



典型案例

TYPICAL CASES

优点远不止多主缸 效果远超预期

采购过中金钢筋撕碎线的山东潍坊董总，了解中金研发实力和产品质量，升级打包机时毫不犹豫地选择了中金首台2000吨多主缸打包机，使用后对设备的质量（如：无一次漏油）、性能（如：液压油温度未超过50℃）、使用效果（如：密度超过3.0t/m³以上）均“特别满意”，也彻底打消了多主缸的顾虑，对主缸使用没有了后顾之忧，认为是“目前中国最领先的机器”。

MORE THAN JUST MULTI-CYLINDER DELIVER RESULTS BEYOND EXPECTATIONS

Mr. Dong, a client from Weifang, Shandong Province who had previously purchased a ZONKIN steel bar shredding line, was fully aware of ZONKIN's R&D capabilities and product quality. When it came time to upgrade his baling machine, he did not hesitate to choose ZONKIN's first 2000-ton multi-cylinder baler. After using the equipment, he expressed "extreme satisfied" with its quality (e.g., no oil leakage), performance (e.g., hydraulic oil temperature never exceeding 50°C), and results (e.g., density consistently over 3.0 t/m³). The machine completely eliminated his concerns about multi-cylinder reliability and freed him from any misgivings about the main cylinders' durability. He considers it "the most advanced machine in China today."



详情请微信扫码观看客户亲自讲述
Scan the WeChat QR code for a first-hand account from our client
中金打包机 颠覆传统 领先的远不止“多主缸”
行业第一台多主缸打包机使用者 董总亲自讲述



钢丝床垫压块
Steel-wire mattress briquette



钢筋压块
Rebar briquette



EFFICIENT METAL CHIP BRIQUETTING MACHINE 高效屑饼机

主要参数

PARAMETERS

型号 Model	压力 Force (t)	压缩形式 Compression mode	模腔尺寸 Mold cavity dimensions (mm)	压块尺寸 Block dimensions (mm)	产量 Output (t/h)	电机功率 Motor power (kW)
Y83W-630	630	卧式/立式 Horizontal / Vertical	φ200 × 550	φ200 × (150~200)	4~5	1×90
Y83W-1250	1250	卧式/立式 Horizontal / Vertical	φ320 × 600	φ320 × (240~300)	14~17	2×111
Y83W-1600	1600	卧式/立式 Horizontal / Vertical	φ350 × 700	φ350 × (280~320)	20~25	3×111
Y83W-2000	2000	卧式/立式 Horizontal / Vertical	φ400 × 700	φ400 × (300~350)	25~30	4×111
Y83W-2500	2500	卧式/立式 Horizontal / Vertical	φ450 × 800	φ450 × (350~400)	30~35	5×111

* 说明：由于技术不断更新，技术参数和外形可能有更改，恕不另行通知。

* Explanation: Due to continuous technological updates, technical parameters and appearance may change without prior notice.

独特优势

UNIQUE ADVANTAGES

- ◆ **更高效**：采用独特的机电液一体化技术，产量比传统产品高约30%
- ◆ **长寿命**：采用自主创新研发技术，主缸质量及使用寿命与工程机械油缸相媲美，使用无忧
- ◆ **质量可靠**：整机采用工程机械质量标准设计生产，关键部件等强度设计，更可靠耐用
- ◆ **售后无忧**：一把手工程，售后无忧

- ◆ **Higher Efficiency**: Adopting unique electromechanical-hydraulic integration technology, increasing output by approximately 30% compared to traditional products
- ◆ **Longevity**: Adopting innovative technology, the quality and service life of the master cylinder are comparable to those of engineering machinery oil cylinders, ensuring worry free use
- ◆ **Reliable Quality**: The entire machine is designed and produced according to engineering machinery quality standards, and key components have been strengthened in design for greater reliability and durability
- ◆ **Worry-Free After-Sales Service**: Dedicated leadership oversight ensures comprehensive after-sales support

PUSHING-TYPE CRUSHER 推料破碎机



专利号 Patent Number

2023101721317 /发明专利
202223544816X/实用新型
202322346923X/实用新型
2022308452731/外观设计
2023304988335/外观设计
等多项

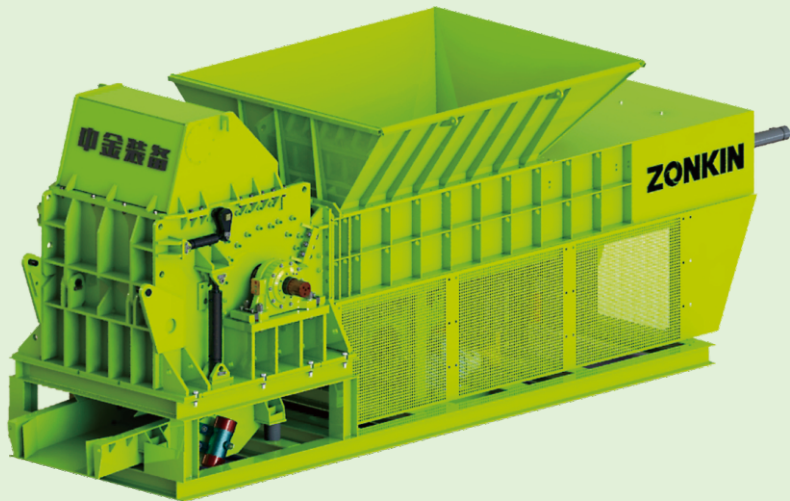


产品宣传片
Promotional Video



日常工作实拍
Daily Work Video

微信扫码观看
Scan the QR Code with
WeChat to Watch the Video



主要参数 PARAMETERS

型号 Model	PSJ 1000-160	PSJ 1200-250	PSJ 1400-315	PSJ 1400-450	PSJ 1800-630	PSJ 1800-800	PSJ 2200-1500	PSJ 2200-2000	PSJ 2500-3000
参数 Parameters									
主电机功率 Main motor power (kW/HP)	160/214	250/335	315/422	450/603	630/844	800/1072	1120/1500	1492/2000	2240/3000
工作电压 Working voltage	380V	380V	380V	380V	380V	6kV/10kV	6kV/10kV	6kV/10kV	6kV/10kV
启动方式 Starting mode	标配: 软启 选配: 变频 Standard : Soft start Optional: variable frequency	标配: 软启 选配: 变频 Standard : Soft start Optional: variable frequency	标配: 软启 选配: 变频 Standard : Soft start Optional: variable frequency	标配: 软启 选配: 变频 Standard : Soft start Optional: variable frequency	标配: 软启 选配: 变频 Standard : Soft start Optional: variable frequency	标配: 软启 选配: 变频 Standard : Soft start Optional: variable frequency	标配: 液阻柜 选配: 变频 Standard : Liquid resistance cabinet Optional: variable frequency	液阻柜 Liquid resistance cabinet	液阻柜 Liquid resistance cabinet
参考产能 Reference capacity (t/h)	2~3	3~6	5~9	7~12	9~15	15~20	30~40	40~60	50~80
破碎腔宽度 Width of crushing chamber (mm)	1000	1200	1400	1400	1800	1800	2200	2200	2500
料箱开口长度 Opening length of box (m)	2	3	3	3	3	3	3.5	3.5	3.5

* 说明: 由于技术不断更新, 技术参数和外形可能有更改, 恕不另行通知。
* Explanation: Due to continuous technological updates, technical parameters and appearance may change without prior notice.

独特优势

UNIQUE ADVANTAGES

- ◆ 省 心: 工程机械质量标准, 实时监控和保护, 质量更可靠; 独特的安全防护设计, 运行更安全; 一把手工程, 售后无忧
- ◆ 省 钱: 产能同比高约15%, 只需挖机操作手一人操作
- ◆ 省时间: 可带载正反转 (变频配置), 噎机处理时间减少约90%; 独特设计, 筛板更换时间减少约50%
- ◆ 省场地: 占地面积较传统设备节省约30%
- ◆ Hassle-Free: Adheres to engineering machinery quality standards with real-time monitoring and protection for more reliable quality. Unique safety guard design for safer operation. Top-management project ensures hassle-free after-sales service
- ◆ Cost-Effective: Approximately 15% higher capacity compared to industry average; requires only one excavator operator
- ◆ Time-Saving: Forward and reverse rotation with load (with variable frequency drive), reducing jam processing time by about 90%. Unique design cuts screen plate replacement time by approximately 50%
- ◆ Space-Saving: Footprint is about 30% smaller than traditional equipment

部分案例

PARTIAL CASES



湖南 Hunan



海南 Hainan



河北 Hebei



广东 Guangdong

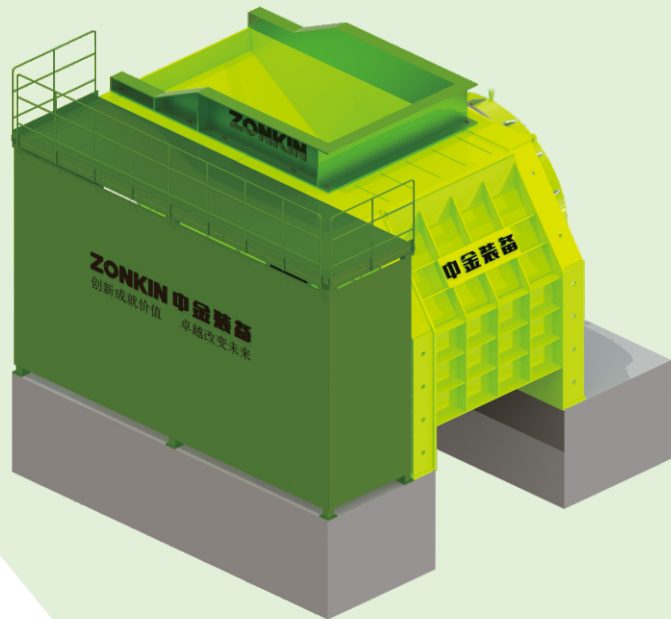


江苏 Jiangsu



江苏 Jiangsu

HIGH-DENSITY METAL SCRAP PRE-SHREDDER 高密度包块预碎机



专利号 Patent Number

2018208568736/实用新型
2018208569052/实用新型
等多项



产品宣传片
Promotional Video



日常工作实拍
Daily Work Video

微信扫码观看
Scan the QR Code with
WeChat to Watch the Video

主要参数 PARAMETERS

型号 Model	工作腔宽度 Working chamber width (mm)	电机功率 Motor power (kW)	参考产能 Reference production capacity (t/h)		
			包块密度 < 1.2t/m³ Bale density < 1.2t/m³	包块密度 < 1.5t/m³ Bale density < 1.5t/m³	包块密度 < 1.8t/m³ Bale density < 1.8t/m³
20T	1800	237	20~25	15~20	10~15
30T	2000	274	25~35	20~25	15~20
50T	2000	448	45~55	25~35	20~25
80T	2200	773	75~85	45~55	30~40
100T	2200	925	85~100	60~90	50~70

* 说明：由于技术不断更新，技术参数和外形可能有更改，恕不另行通知。
* Explanation: Due to continuous technological updates, technical parameters and appearance may change without prior notice.

独特优势 UNIQUE ADVANTAGES

- ◆ 适应性广：能批量高效处理密度达1.8t/m³的包块（部分机型）
- ◆ 节省成本：单吨加工成本降低约30%
- ◆ 技术先进：采用先进的传动技术，产能更有保障，优于国外进口产品
- ◆ 售后无忧：一把手工程，售后无忧
- ◆ Wide Adaptability: capable of efficiently processing bales with a density of up to 1.8t/m³ in batches (for some models)
- ◆ Cost Savings: reduce processing costs by approximately 30% per ton
- ◆ Advanced Technology: adopting advanced transmission technology, production capacity is more guaranteed, superior to foreign-made competitors
- ◆ Worry-Free After-Sales Service: Dedicated leadership oversight ensures comprehensive after-sales support

典型案例 TYPICAL CASES

有效解决产品痛点 助力客户做大做强

江苏盐城汪总为继续做大做强、增加破碎料的产量，在对比国内外各厂家的预碎机后，慧眼选择了中金80T预碎机与行业先进的4000HP破碎线搭配生产，该预碎机投产后，其在产能、料型适应性、生产成本、可靠性等方面均超过预期和国内外同行水平，达到了国内外行业先进水平，有效解决了国内外预碎机存在的产能不足和相关质量缺陷，助力客户降低生产成本、迅速做大做强、逆市崛起。

EFFECTIVE SOLUTIONS FOR PRODUCT POWERFUL GROWTH FOR BUSINESS

To further expand and strengthen operations while increasing crush material output, Mr. Wang from Yancheng, Jiangsu, carefully evaluated pre-shredders from domestic and international manufacturers. He wisely selected the ZONKIN Equipment's 80T pre-shredder paired with the industry's most advanced 4000HP crushing line for production, after the pre-shredder was put into operation, its performance in terms of production capacity, material adaptability, production cost, and reliability all exceeded expectations and the levels of domestic and international peers, reaching the advanced level of the industry at domestic and abroad. It effectively solved the problems of insufficient capacity and related quality defects existing in domestic and international pre-shredders, helping customers reduce production costs, rapidly expand and strengthen their operations, and rise against the market trend.



HYDRAULIC STEEL BAR SHREDDER

液力式钢筋撕碎线



专利号 Patent Number

2022101364743/发明专利	201922441571X/实用新型	2020201639028/实用新型
2019219132725/实用新型	2019224485430/实用新型	2020201853854/实用新型
2020205501360/实用新型	2020217553328 /实用新型	2022207457465/实用新型
2020212570204/实用新型	2020217553351 /实用新型	201930611383X /外观设计
等多项		



产品宣传片
Promotional Video



日常工作实拍
Daily Work Video

微信扫码观看
Scan the QR Code with
WeChat to Watch the Video

主要参数

PARAMETERS

型 号 Model	刀口宽度 Blade width (mm)	参考产能 Reference capacity (t/h)	主电机功率 Main motor power (kW)	适应钢筋直径 Adapt to the diameter of steel bars (mm)	默认出料长度 Default discharge diameter (mm)
3T-C	300	3~5	37 (1×37)	≤ 22	≤ 100
5T-C	500	4~5	45 (1×45)	≤ 22	≤ 100
6T-C	500	5~7	74 (2×37)	≤ 22	≤ 100
8T-C	700	7~9	90 (2×45)	≤ 22	≤ 100
13T-C	700	11~15	148 (4×37)	≤ 22	≤ 100
16T-C	700	13~17	180 (4×45)	≤ 22	≤ 100
22T-C	1000	17~23	222 (6×37)	≤ 22	≤ 100
26T-C	1600	23~28	270 (6×45)	≤ 22	≤ 100
16T-700M (移动式 mobile)	700	8~12	180 (4×45)	≤ 22	≤ 100
16T-1000M (移动式 mobile)	1000	10~15	180 (4×45)	≤ 22	≤ 100
22T-1600M (移动式 mobile)	1600	15~20	180 (6×30)	≤ 22	≤ 100

* 说明：由于技术不断更新，技术参数和外形可能有更改，恕不另行通知。

* Explanation: Due to continuous technological updates, technical parameters and appearance may change without prior notice.

独特优势

UNIQUE ADVANTAGES

- ◆ **更 省 电**：采用液力式传动专利技术，同产能情况下装机功率仅为同行约50%，每年可节省电费数十万元
- ◆ **高 品 质**：采用三一重工工程机械质量标准，严苛的生产质保体系，确保产品质量可靠
- ◆ **长 寿 命**：刀片采用特种合金钢和特殊热处理工艺，经市场检验，使用寿命大幅延长，刀片可低成本修复
- ◆ **高智能化**：设备可实现自动正反转，输送带自动启停、转速自动调节等功能，自动化程度更高，有效降低工人工作强度
- ◆ **More Energy-Efficient**: With a patented hydraulic transmission technology, the installed power is only about 50% of its peers under the same production capacity, saving hundreds of thousands of yuan in electricity bills annually
- ◆ **Higher Quality**: Adopting the top engineering machinery quality standards of Sany Heavy Industry and a rigorous production quality assurance system to ensure first-class product quality
- ◆ **Long Service Life**: Blades are made of special alloy steel and undergo special heat treatment. Proven by market tests, their service life is significantly extended, and they can be repaired at low cost
- ◆ **High Intelligence**: The equipment can achieve automatic forward and reverse rotation, automatic start/stop of the conveyor belt, and automatic speed adjustment, etc. With a higher degree of automation, it effectively reduces workers' workload

典型案例

TYPICAL CASES

两送锦旗赞品质 四年增产换新天

山东青岛王总2019年采购中金首台钢筋撕碎线，生意越来越红火，使用四年后王总置换成更大的场地，钢筋撕碎线仍稳定运行至今。

TWO BANNERS FOR QUALITY, FOUR YEARS OF PRODUCTION GROWTH INDUSTRY PREFERRED, QUALITY WORD-OF-MOUTH

Mr. Wang from Qingdao, Shandong purchased the first steel bar shredding line from ZONKIN in 2019, and business has become increasingly prosperous. After four years of use, Mr. Wang replaced it with a larger site, and the steel bar shredding line runs stably.



辽宁 Liaoning



贵州 Guizhou



黑龙江 Heilongjiang



新疆 Xinjiang



甘肃 Gansu



青海 Qinghai



山东 Shandong

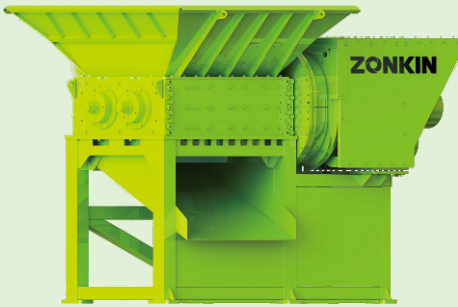


江苏 Jiangsu

SCRAP STEEL SHREDDER
废钢撕碎机

专利号 Patent Number

2019106475971 /发明专利
2022100247988/发明专利
2019211295141 /实用新型
2019211295122/实用新型
2019211292904/实用新型
等多项



主要参数

PARAMETERS

型号 Model	主电机功率 Main motor power (kW)	刀口宽度 Blade width (mm)	默认刀片厚度 Default blade thickness (mm)	参考产能 Reference production capacity (t/h)	参考刀盘直径 Reference cutterhead diameter (mm)	参考主轴直径 Reference spindle diameter (mm)
1400	130	1400	136	6~10	570	270
1600	185	1600	136	10~15	570	270
1800	222	1800	136	15~20	570	270
2000	270	2000	136	20~30	710	310
2200	332	2200	136	30~40	710	310

* 说明：由于技术不断更新，技术参数和外形可能有更改，恕不另行通知。
* Explanation: Due to continuous technological updates, technical parameters and appearance may change without prior notice.

独特优势

UNIQUE ADVANTAGES

- ◆ 质量可靠：整机采用工程机械质量标准，可靠性更高
- ◆ 持久耐用：采用工程机械设计标准，关键部件均采用加强设计，质量更可靠、更耐用
- ◆ 售后无忧：一把手工程，售后无忧
- ◆ Reliable Quality:The entire machine complies with engineering machinery quality standards, ensuring higher reliability
- ◆ Durable & Long-Lasting: Adopting with engineering machinery design standards, key components are reinforced in design, making it more reliable and durable
- ◆ Worry-Free After-Sales Service: Dedicated leadership oversight ensures comprehensive after-sales support

创新成就价值

Innovation creates value

卓越改变未来

Excellence changes the future